

# OASIS NURSERIES GROUP

## LANDSCAPE TREES & ORNAMENTAL PLANTS CATALOGUE

2025



# HIBISCUS ROSA-SINENSIS (HIBISCUS PINK)



Hibiscus rosa-sinensis, or Chinese Hibiscus, is a fast-growing shrub or small tree with large, colorful flowers blooming year-round. It thrives in tropical climates with full sun and well-drained soil. Ideal for ornamental use, hedges, and attracting pollinators. Requires moderate watering and regular pruning.

Total Ht.	DBH
4 Meter	10 - 13,5 cm

Identical Replacement for Norfolk Island Hibiscus (Lagunaria patersonia), because it's not Indonesian Plants

# SYZYGIUM SAMARANGENSE (WATER APPLE)



Syzygium samarangense, commonly known as Water Apple or Java Apple, is a fast-growing tropical tree reaching 3–10 meters tall. It produces glossy green leaves and bell-shaped, juicy fruits that are pale green to red. Prefers full sun, well-drained soil, and regular watering. Often used in orchards, gardens, or as a shade tree. Minimal pruning needed; attracts birds and pollinators.

Total Ht.	DBH
4 Meter	10 - 13,5 cm

The available stock at the nursery is 3 meters in height. A 4 meter tree can be provided upon request, subject to a growing period



## BARRINGTONIA ACUTANGULA (MANGO-PINE.)



**Barringtonia acutangula**, known as **Mango-pine** or **Freshwater Mangrove**, is a medium-sized tree growing up to 8–15 meters. It features drooping branches, narrow leaves, and long, showy red flower spikes. Thrives in moist, tropical areas—often near rivers or wetlands. Useful for shade, ornamental planting, and erosion control. Requires moderate watering and minimal maintenance.

Total Ht.	DBH
6 Meter	20 cm

## BARRINGTONIA ASIATICA (FISH POISON TREE)



**Barringtonia asiatica**, or **Fish Poison Tree**, is a coastal tree reaching 7–15 meters tall with large, glossy leaves and striking, fragrant pink-white pompom flowers. Native to tropical shores, it thrives in sandy, well-drained soil and full sun. Its box-like fruit is buoyant and salt-tolerant. Commonly used for coastal landscaping and shade; low maintenance and wind-resistant.

Total Ht.	DBH
4 Meter	3 cm

# OLEA EUROPEA (OLIVE TREE )



**Olea europaea**, or Olive Tree, is a slow-growing evergreen tree reaching 4–12 meters tall. It has silvery-green leaves and small, fragrant flowers followed by green to black olives. Thrives in hot, dry climates with well-drained soil and full sun. Drought-tolerant and long-lived, it's valued for both ornamental use and fruit production. Low maintenance once established.

Total Ht.	DBH
1 - 1,5 Meter	5 - 6 cm
2,5 Meter	5 - 6 cm

**Black Olive Trees are not available in Indonesia. Only regular Olive Trees are available.**

# STYRAX BENZOIN (GUM BENZOIN TREE)



**Styrax benzoin**, or Gum Benzoin Tree, is a medium-sized tree growing up to 10–20 meters tall. Native to Southeast Asia, it has oval leaves and small white flowers. The tree produces aromatic resin (benzoin) used in incense and perfume. Prefers humid, tropical climates with well-drained soil. Suitable for agroforestry and traditional use. Requires moderate maintenance.

Total Ht.	DBH
6 Meter	13 -15 cm

**Identical Replacement for Gumbo Limbo Tree ( Bursera simaruba) because it's not Indonesian Plants**



## CUPRESSUS SEMPERVIRENS (CYPRESS TREE)



**Cupressus Sempervirenes** is medium sized confireous evergreen tree growing up to 35 metre tall. produces lateral shoots or branches which often growing upwards to ward the light source.

Can be used as a ideal hedge type tree used for screens and green walls.

Total Ht.	DBH
4 Meter	13 - 15 cm

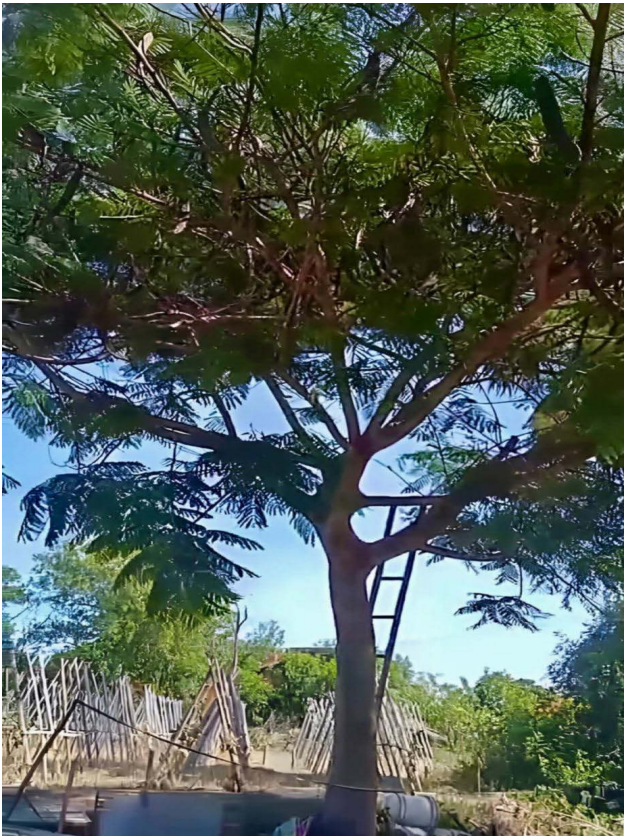
## COCCOLOBA UVIFERA (SEA GRAPE )



**Coccoloba uvifera**, or Sea Grape, is a coastal shrub or small tree reaching 3–8 meters tall. It has large, round, leathery leaves and clusters of green to purple grape-like fruits. Thrives in sandy, well-drained soil and full sun; salt and wind tolerant. Ideal for coastal landscaping, erosion control, and shade. Low maintenance and drought-tolerant once established.

Total Ht.	DBH
6 Meter	5 - 7 cm

# DELONIX REGIA (ROYAL POINCIANA)



Delonix regia, or Royal Poinciana, is a fast-growing deciduous tree reaching 9–12 meters tall. Known for its wide, umbrella-like canopy and brilliant red-orange flowers, it thrives in tropical to subtropical climates with full sun and well-drained soil. Ideal for ornamental use and shade. Requires moderate watering and seasonal pruning.

Total Ht.	DBH
6 Meter	20 - 25 cm

# TABEBUIA ROSEA (ROSY TRUMPET TREE)



Tabebuia rosea, or Rosy Trumpet Tree, is a medium to large deciduous tree growing 8–15 meters tall. It produces stunning pink to light purple trumpet-shaped flowers, typically blooming before leaf flush. Thrives in tropical to subtropical climates with full sun and well-drained soil. Popular for ornamental planting and street shading. Moderate maintenance and seasonal pruning needed.

Total Ht.	DBH
6 Meter	15 - 20 cm



# COCOS NUCIFERA (COCONUT PALM)



Cocos nucifera, or Coconut Palm, is a tall, slender palm reaching 15–30 meters. It has a smooth trunk, feathery fronds, and produces coconuts used for food, oil, and drink. Thrives in sandy, well-drained soil and full sun, especially in coastal tropical climates. Salt-tolerant, drought-resistant, and ideal for beaches and resorts. Low maintenance.

Total Ht.
7 Meter

# PHOENIX CANARIENSIS (CANARY ISLAND DATE PALM)



Phoenix canariensis, or Canary Island Date Palm, is a stately palm growing 10–20 meters tall with a thick trunk and dense crown of arching, feather-like fronds. Prefers full sun and well-drained soil, tolerates drought and salt. Often used in landscaping for a tropical, elegant look. Low maintenance once established.

Total Ht.
7 Meter

# SABAL PALMETTO (CABBAGE PALM)



Sabal palmetto, or Cabbage Palm, is a hardy, slow-growing palm reaching 10–20 meters tall with a thick trunk and fan-shaped fronds. Native to coastal and subtropical areas, it tolerates salt, drought, and wind. Thrives in full sun and well-drained soil. Commonly used in streetscapes, coastal gardens, and public spaces. Very low maintenance.

Total Ht.
6 Meter

# CORDYLINE AUSTRALIS (CABBAGE TREE )



Cordyline australis, or Cabbage Tree, is a striking evergreen tree reaching 4–10 meters tall with slender trunks and tufts of long, sword-shaped leaves. It produces fragrant white flowers in large panicles. Thrives in full sun to partial shade and well-drained soil. Drought and wind tolerant, ideal for ornamental use in gardens and landscapes. Low maintenance.

Total Ht.	DBH
6 Meter	15 - 20 cm

Identical Replacement for Dragon Tree ( Dracaena Draco) because it's not Indonesian Plants



**OASIS NURSERIES GROUP**

**FLOWERING TREES**

**CATALOGUE**

**2025**





# ALBIZIA LEBBECK



**Albizia lebeck**, also known as **Woman’s Tongue Tree** or **Siris Tree**, is a fast-growing deciduous tree reaching 10–20 meters tall. It has a wide, spreading canopy with feathery leaves and fragrant, pale yellow-green flowers. Thrives in tropical to subtropical climates with full sun and well-drained soil. Ideal for shade, ornamental use, and reforestation. Low to moderate maintenance.

Total Ht.	DBH
3 - 4 Meter	8 - 10 cm

# BAUHINEA ALBA



**Bauhinia alba**, also known as **White Orchid Tree**, is a small to medium-sized ornamental tree growing 4–10 meters tall. It features twin-lobed leaves and elegant white, orchid-like flowers. Prefers full sun and well-drained soil in tropical to subtropical climates. Often used in gardens, streetscapes, and as a flowering accent tree. Moderate maintenance.

Total Ht.	DBH
3 - 4 Meter	6 - 7 cm



## BAUHINEA PURPUREA



**Bauhinia Purpurea** is a medium size tree, growing to 5.2 metres tall. The leaves are alternatively 10-20 centimetres long and broad, rounded, and bilobed at the base and apex. The flowers are pink and fragrant with five petals. The fruit is a pod measuring 30 cm long

Total Ht.	DBH
3 - 4 Meter	6 - 7 cm

## CALISTEMON VIMINALIS



**Calistemon Viminalis** is a large shrub or small tree growing to 10 metres tall with hard fibrous, furrowed bark, a number of trunk usually pendulous branches. The flowers are bright red and arrange in spikes on around the ends of branches which continue to grow after flowering.

Total Ht.	DBH
3 - 4 Meter	6 - 7 cm

## CASSIA GLAUCA



**A semi deciduous shrub or small tree to 5 metres native to Southern Asia. This cassia tree makes a beautiful shade tree**

**in tropical to subtropical climates. Often used in gardens, streetscapes, and as a flowering accent tree. Moderate maintenance.**

Total Ht.	DBH
3 - 4 Meter	6 - 7 cm

## AZADIRACHTA INDICA



**Azadirachta Indica is a fast growing tree that can reach a height 15-20 metres. It is evergreen, shedding many of its leaves in winter. the branches are wide and spreading. White and fragrant flowers are arranged in axillary panicles which are up to 25cm long.**

Total Ht.	DBH
3 - 4 Meter	6 - 7 cm



# CASSIA JAVANICA



**Cassia javanica**, or **Pink Shower Tree**, is a medium to large deciduous tree reaching 10–15 meters tall. It produces stunning clusters of pink to rose-colored flowers, especially in dry seasons. Thrives in full sun and well-drained soil, suited to tropical and subtropical climates. Popular for ornamental use, roadside planting, and shade. Moderate maintenance and seasonal pruning.

Total Ht.	DBH
3 - 4 Meter	6 - 7 cm



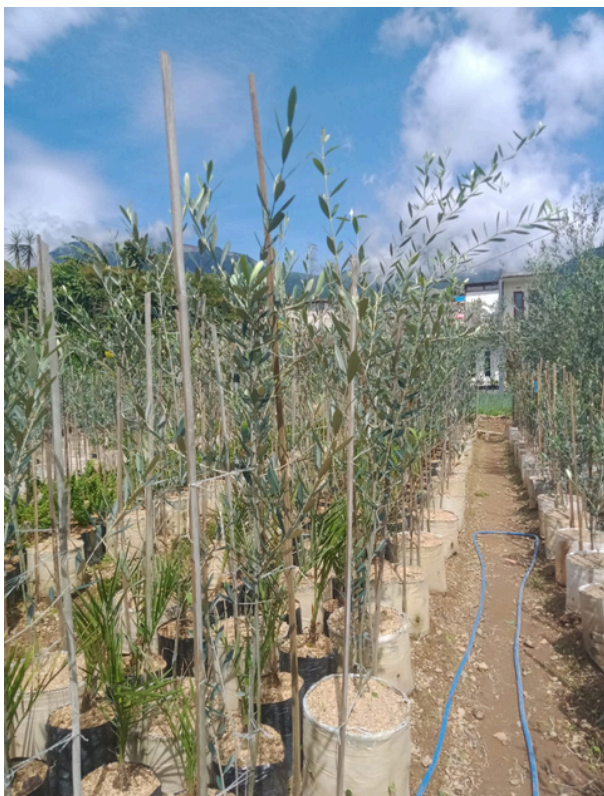
## MILLINGTONIA HORTENSIS



**Millingtonia hortensis**, or **Indian Cork Tree**, is a fast-growing deciduous tree reaching 10–18 meters tall. It features upright growth, compound leaves, and fragrant white tubular flowers that bloom at night. Prefers full sun and well-drained soil in tropical to subtropical climates. Commonly used for ornamental planting, shade, and avenue trees. Low to moderate maintenance.

Total Ht.	DBH
3 - 4 Meter	6 - 7 cm

## OLEA EUROPEA



**Olea europaea**, or **Olive Tree**, is a slow-growing evergreen tree reaching 4–12 meters tall. It has silvery-green leaves and bears small, fragrant flowers followed by edible olives. Thrives in hot, dry climates with full sun and well-drained soil. Drought-tolerant and long-lived, ideal for ornamental use or fruit production. Low maintenance once established.

Total Ht.	DBH
2,5 Meter	2 - 3 cm



# PELTOPHORUM INERMI



**Peltophorum inerme**, or **Yellow Flame Tree**, is a fast-growing, medium to large deciduous tree reaching 10–18 meters tall. It has a wide, spreading canopy with feathery leaves and large clusters of bright yellow flowers. Thrives in full sun and well-drained soil, suitable for tropical and coastal areas. Commonly used for shade, ornamental planting, and along roadsides. Low to moderate maintenance.

Total Ht.	DBH
3 - 4 Meter	6 - 7 cm

# PLUMERIA RUBRA



**Plumeria rubra**, or **Frangipani**, is a small deciduous tree or large shrub growing 4–8 meters tall. It features thick branches, leathery leaves, and fragrant, five-petaled flowers in colors ranging from white to pink, red, or yellow. Thrives in full sun and well-drained soil, ideal for tropical and subtropical gardens. Popular for ornamental use, especially near patios and walkways. Low maintenance and drought-tolerant.

Total Ht.	DBH
2,5 Meter	6 - 7 cm



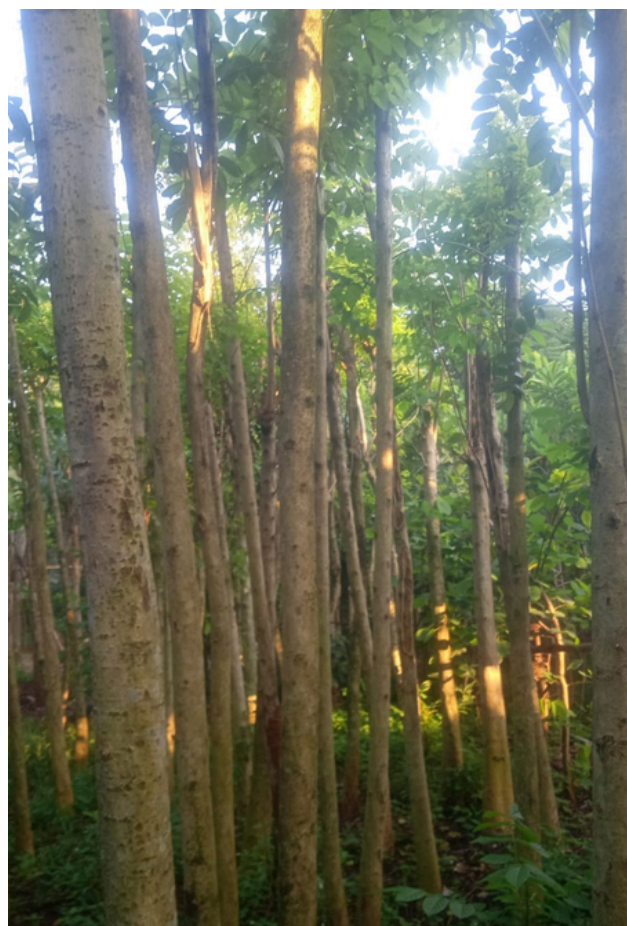
## PONGAMIA GLABRA



**Pongamia glabra**, also known as **Pongam Tree** or **Indian Beech**, is a medium-sized, fast-growing evergreen tree reaching 10–15 meters tall. It has glossy pinnate leaves and clusters of fragrant pink to lavender flowers, followed by flat seed pods. Thrives in full sun and well-drained soil, tolerant of drought and saline conditions. Commonly used for shade, reforestation, and biofuel production. Low maintenance.

Total Ht.	DBH
3 - 4 Meter	6 - 7 cm

## SPATHODEA CAMPANULATA



**Spathodea campanulata**, or **African Tulip Tree**, is a fast-growing, medium to large tree reaching 10–25 meters tall. It is known for its large, bright orange-red, tulip-shaped flowers and dense, umbrella-like canopy. Thrives in full sun and well-drained soil in tropical climates. Commonly used for ornamental planting, shade, and avenue trees. Moderate maintenance; attracts birds and pollinators.

Total Ht.	DBH
3 - 4 Meter	6 - 7 cm



## TABEBUIA ROSEA



**Tabebuia rosea**, or **Rosy Trumpet Tree**, is a medium to large deciduous tree growing 8–15 meters tall. It features showy pink to light purple trumpet-shaped flowers that bloom in clusters, often before new leaves appear. Thrives in full sun and well-drained soil, suitable for tropical and subtropical climates. Commonly used for ornamental planting, shade, and street landscaping. Moderate maintenance.

Total Ht.	DBH
3 - 4 Meter	6 - 7 cm

## TABEBUIA ARGENTIA



**Tabebuia argentea**, also known as **Silver Trumpet Tree** or **Yellow Tabebuia**, is a small to medium-sized deciduous tree reaching 5–10 meters tall. It produces bright yellow, trumpet-shaped flowers in striking clusters, usually blooming before leaf flush. Prefers full sun and well-drained soil, ideal for tropical to subtropical climates. Popular for ornamental use and street planting. Low to moderate maintenance.

Total Ht.	DBH
3 - 4 Meter	6 - 7 cm